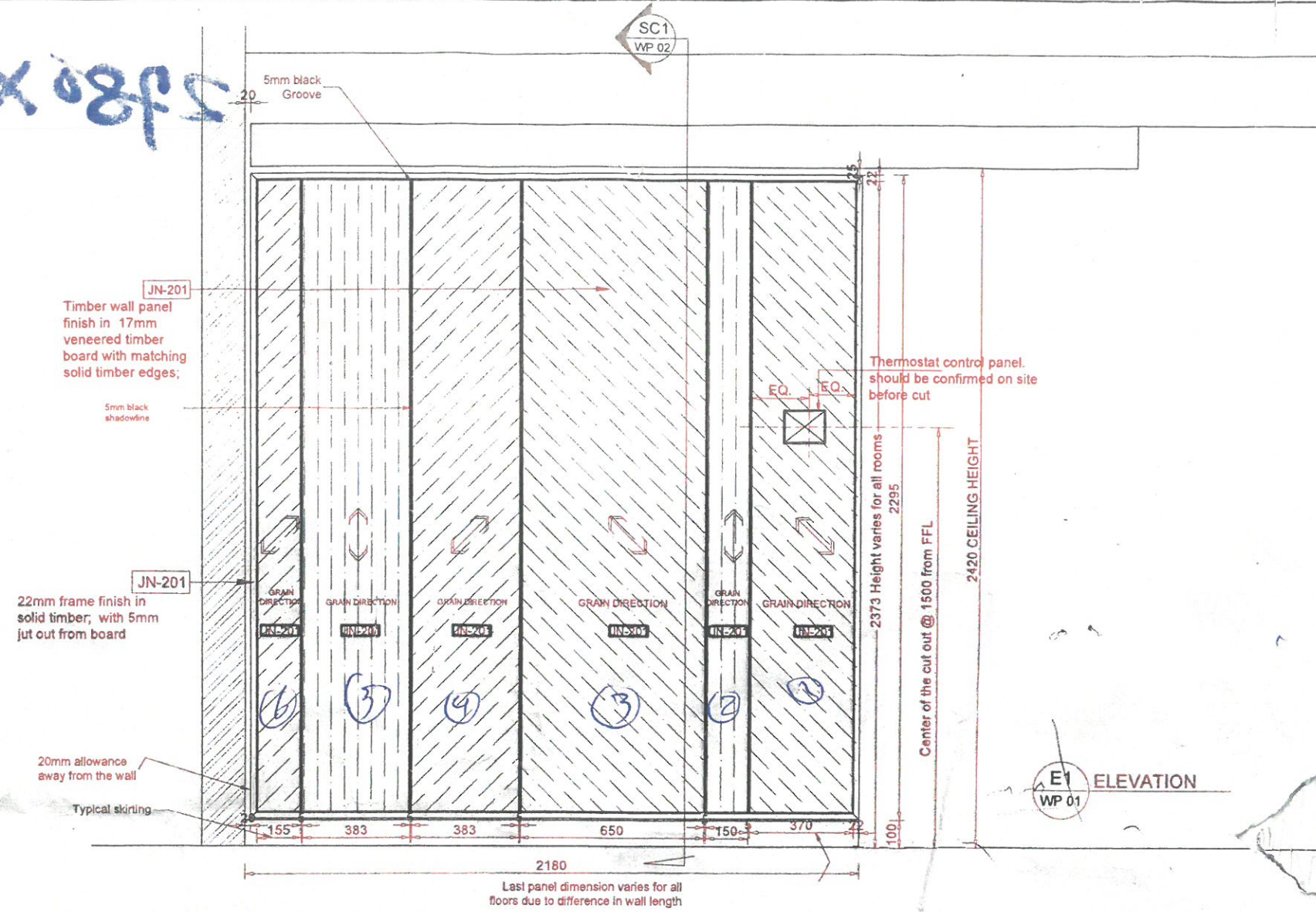


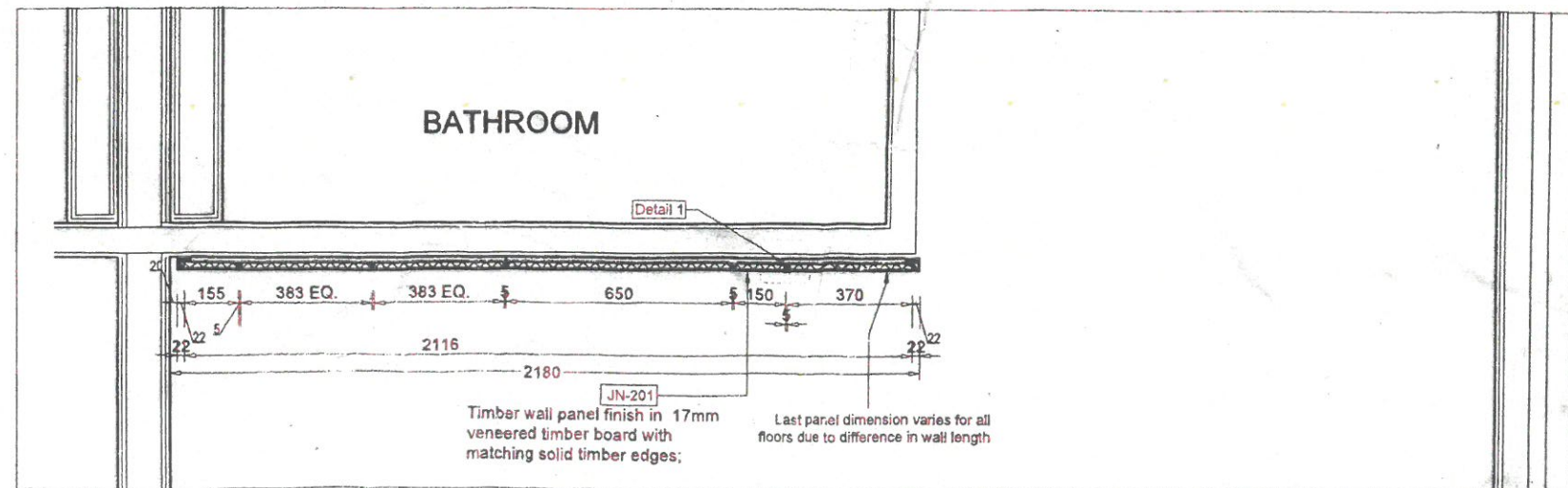
LEGEND - LEFT SIDE CLADDING

ROOM NO	LENGHT	HEIGHT
✓503	2170 /	2410
✓507	2180 \	2410
✓510	2180 \	2410
✓514	2180 \	2410
✓518	2165 X	2410
✓521	2180 \	2410
✓522	2180 \	2410
✓529	2170 /	2410
✓530	2170 /	2410

Handwritten: 2180 X 2410



5
Cladding Position : Left side (Quantity : 9) (Face wall cladding)
Note : Site dimension varies from room to room on the first floor



FIFTH FLOOR PLAN

Plan PLAN WP 01

E1 WP 01

www.wood-styles.com

Copyright of designs shown herein is retained by this office. Authority is required for any reproduction. © Copyright Wood-styles Ltd.

Nigeria, Lagos +234 80 9037 9888
Email: info@wood-styles.com

Project
Hyatt Regency Hotel
NG-Lagos-Ikeja

Owner

Date Description
31 - 05 - 2024 A FOR PRODUCTION

For Production

Project No. : NG23 - Hyatt Regency Hotel
Scale : A1 = 1 : 5, A3 = 1 : 10
Drawn by : Dami, Peace
Checked : Kinan
Cad File : WS-DS-SD-WL-LHH-001

Sheet title
STD room wall panel
Left side-Shop Drawing
Floor 5

Dwg No. WP 01

No. A